



SPX532

Product Catalog

SPX

SPX532

MAX 3200 kg

LxWxH 3120 x 770 x 1950 mm

max 17,3 m
with jib

max 14,8 m
with jib

The user-friendliest crane ever, featuring the most advanced stability system. A top level performance is ensured with this new generation mini crane.



Technical Information

Dimensions	LxWxH	3120 x 770 x 1950 mm
Sub Area		4400 x 4400 mm

Crane & Options Weights		Kg
SPX532CDH		2320
/		200
Multiple Fall		40
JIB		200
Manual Ext.		14
Jib Pulley Head		8

SPX532	Diesel Engine	KUBOTA D902-E4B	16.1 kW 22 Hp
--------	---------------	-----------------	------------------

Speed		2.7 km/h (CDH)
-------	--	----------------

Gradability		20° (36%)
-------------	--	-----------

Ext. Tracks		770-1050 mm
-------------	--	-------------

Max. Track Load

	0.63 kg/cm ²
--	-------------------------



Boom Length

2.5 - 10.8 m 35 sec.

Rotation

360° / 1.2 rpm

Working Angle

0° / 83° 30 sec.

Radio Remote Control INCLUDED

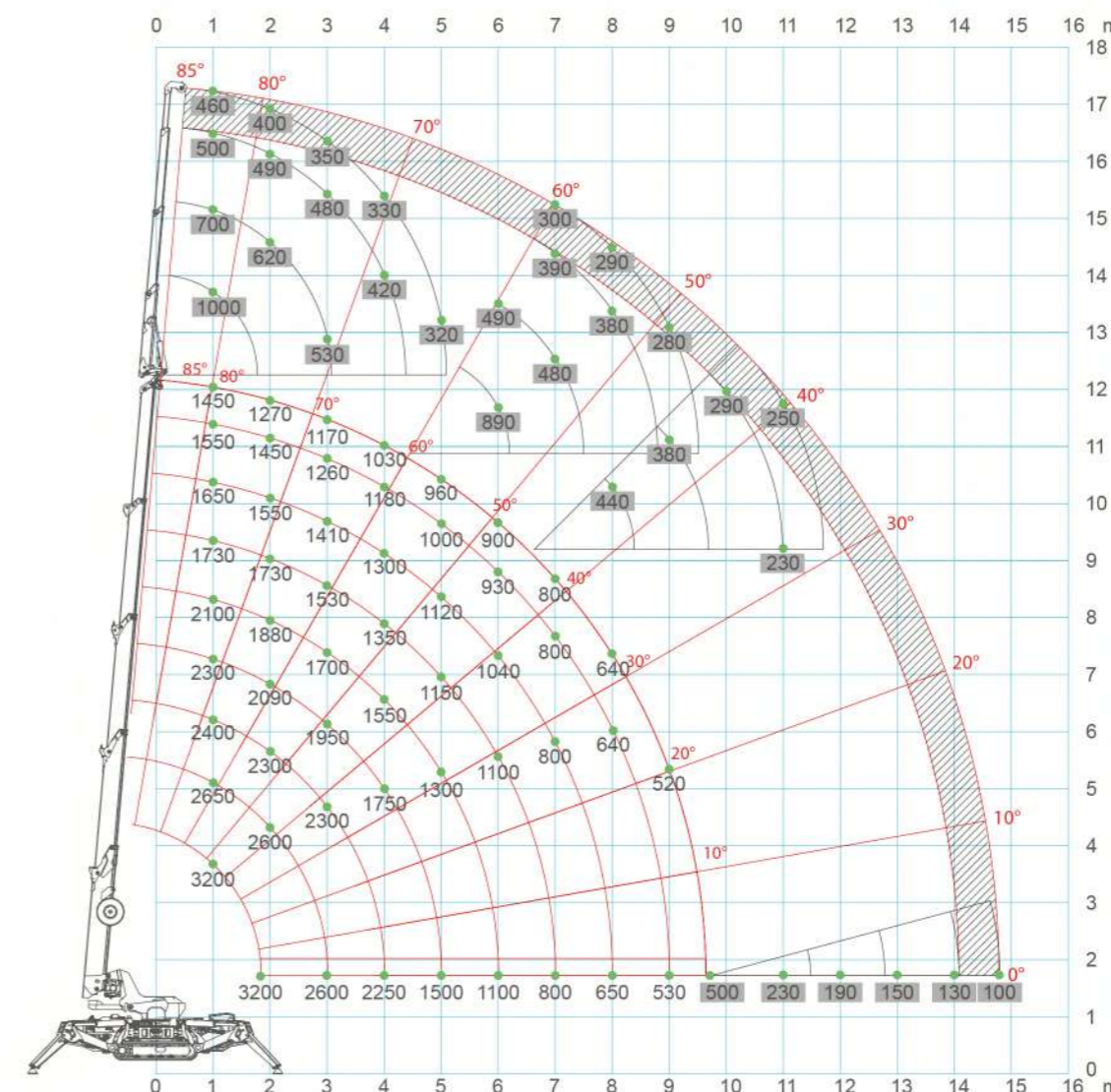
Max. Outrigger Load

MAX	3000 kg
-----	---------



Load Chart

000 Capacity with jib



Crane Options

Lithium Battery Options



BP-LT-SPX532

Electric Power Pack



PP220-4.B
PP200-2.B

Battery Chargers



BC3-220V60A



BC3-110V60A

J-Connect

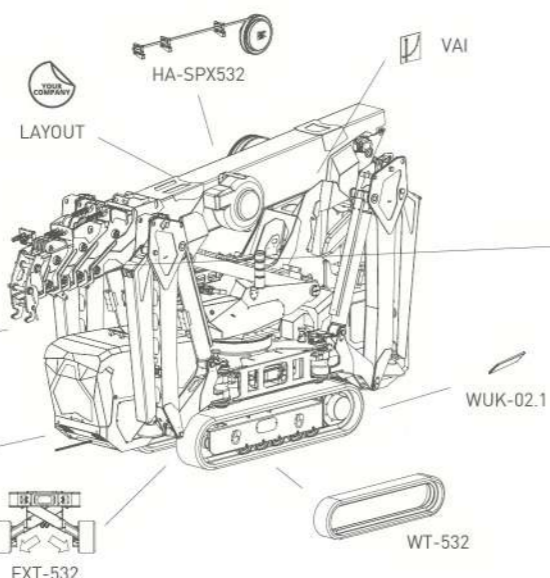


J-CON
J-CON-Y2

OM400.1



OM400.1



Attachments & Tools

JIB1000GX

JIB1000.2H1MX

QC-MV600.R

MV600.R + Steel Holder

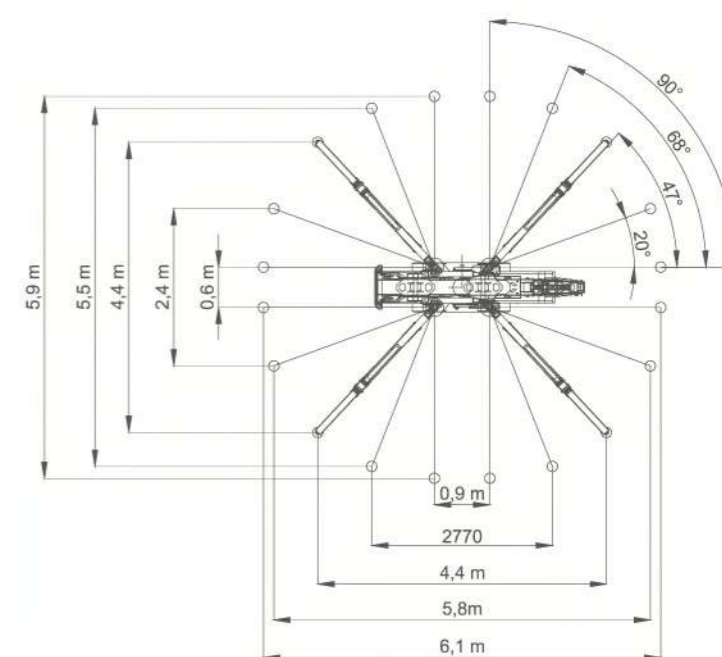
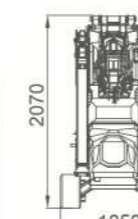
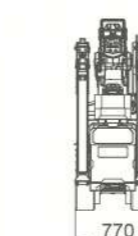
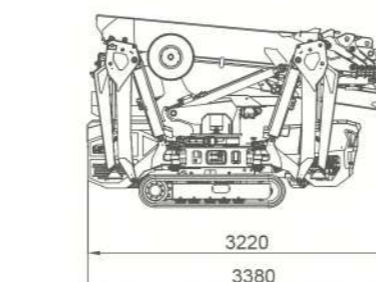
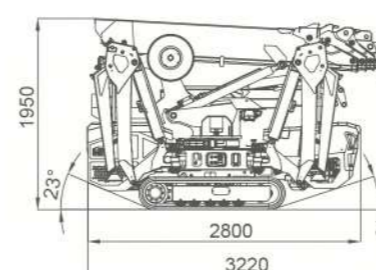
WUK-02.1

WT-532

EXT-532



Dimensions



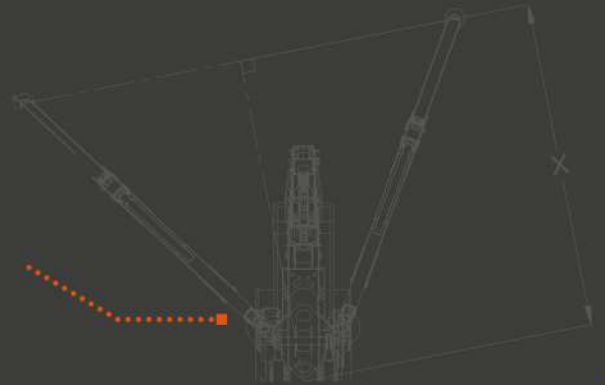
A NEW GENERATION OF MINI CRANES

SPX532 Main Features

THE BEST PERFORMING MINI CRANE IN ITS RANGE WITH A UNIQUE WEIGHT-DIMENSIONS-LIFTING CAPACITY RATIO.

INTUITIVE AND EFFECTIVE STABILIZATION SYSTEM

The outriggers can be opened **from 0° to 90°** creating infinite stabilization combinations. With **4 stabilization areas**, the crane can now work in conditions that would **have never been possible before**.



HYDRAULIC JIB - 1 ton

The Jib can be **easily installed** thanks to an **innovative attachment system** from a support inside the main column.

RADIO REMOTE-CONTROL

SPX532 features a **brand new radio remote-control** with a made in Jekko software that makes this crane extremely easy to use and **the user-friendliest crane ever**.



NEW HYDRAULIC SYSTEM

An improved hydraulic system allows the crane to work with more **fluid and precise movements**, giving a **better feeling to the operator**.

Selecting the proper configuration on the radio remote-control, the crane is able to **adapt to the job** that is being carried out, ensuring **greater efficiency and higher energy saving**.



Jekko srl

Via Campardone, 1 - 31014 Colle Umberto (TV) Italy
info@jekko.it - www.jekko-cranes.com